

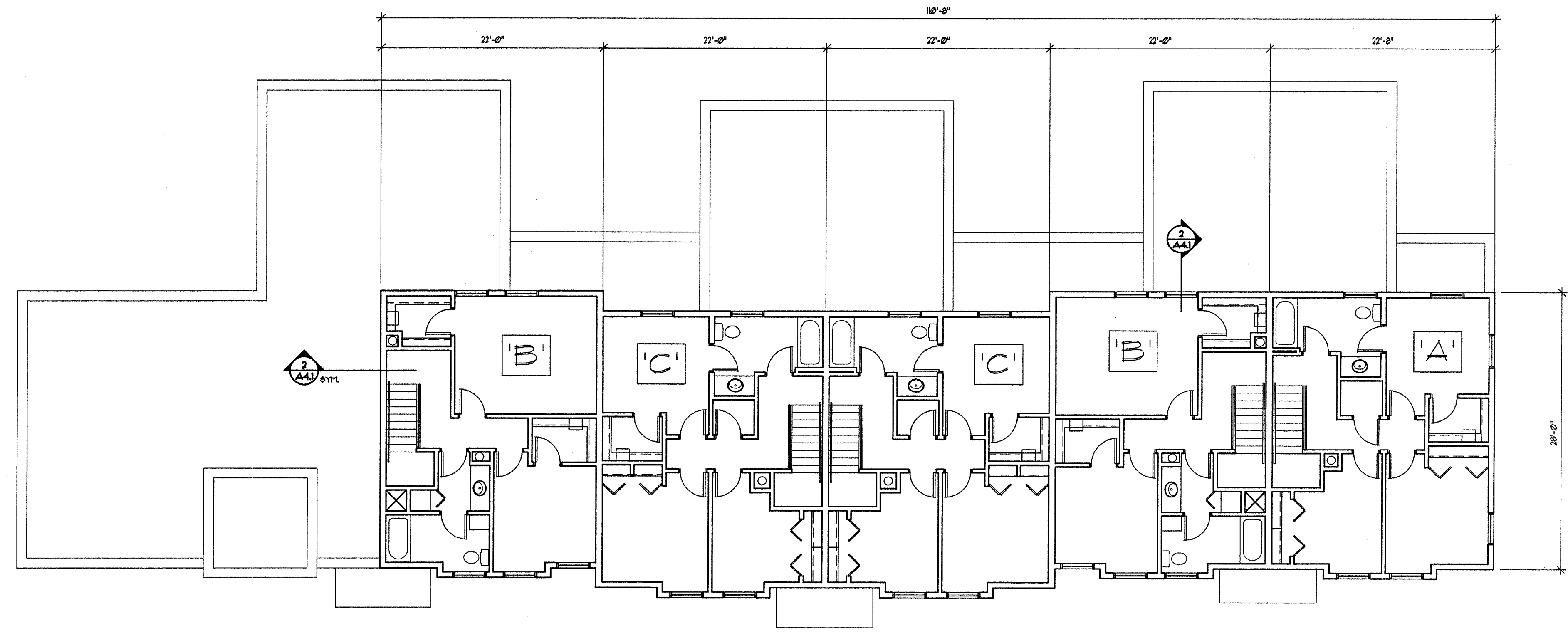
FIRST FLOOR PLAN - BUILDING #1

1
A2.1
SCALE: 1/8" = 1'-0"
A2.2

- GENERAL NOTES:**
- ALL DIMENSIONS ON FLOOR PLANS ARE TAKEN FROM OUTSIDE EDGE OF SHEATHING OR CENTERLINE OF STUDS.
 - PROVIDE CONT. DRAFT STOP TO UNDERSIDE OF ROOF SHEATHING AT ALL AREAS ON PLANS SHOWN WITH HEAVY DASHED LINE.
 - PROVIDE DIAGONAL METAL STRAP BRACING AT OUTSIDE CORNERS OF BUILDINGS.
 - PROVIDE ESCUTCHEON PLATES AT ALL KITCHEN AND BATH PIPE PENETRATIONS.
 - PROVIDE NECESSARY BLOCKING FOR KITCHEN CABINETS, DRAPERY RODS, HANDRAILS, TOWEL BARS, GRAB BARS, CLOSET SHELVING, ETC.
 - SEE SHEET A2.6 FOR WALL, DOOR AND WINDOW TYPES.
 - ALL PENETRATIONS IN UNIT PARTY WALLS (1 HR. TYP.) SHALL BE FIRE STOPPED IN ACCORDANCE WITH FIRE STOP ASSEMBLIES LISTED WITH APPROVED TESTING AGENCIES AND APPROVED BY THE BUILDING OFFICIAL, SEE ALSO SECTION 0712.
 - INSTALL FIRE BLOCKING IN ACCORDANCE WITH THE BUILDING CODE, FOR EXAMPLE:
 - CONCEALED STUD WALLS & PARTITIONS, INCLUDING FURRED SPACES, AT THE CEILING & FLOOR LEVELS AND AT 10 FT. INTERVALS BOTH VERTICAL AND HORIZONTAL.
 - AT ALL INTERCONNECTIONS BETWEEN CONCEALED VERTICAL AND HORIZONTAL SPACES, (BOFFITS, DROPPED CEILINGS, COVE CEILINGS, ETC.)
 - IN OPENINGS AROUND VENTS, PIPES, DUCTS, CHIMNEYS, AND SIMILAR OPENINGS.

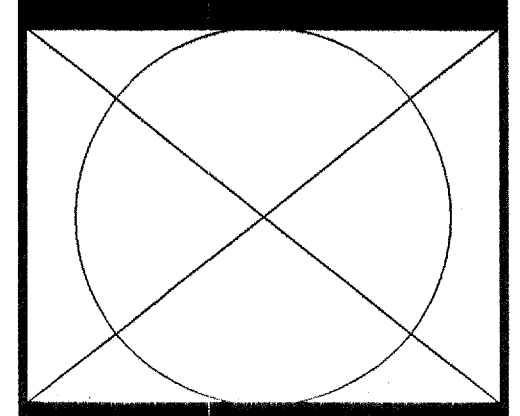
- CONSTRUCTION NOTES FOR LANDSCAPE DETAILS:**
- L1 CONCRETE PATIO SLAB
 - L2 CONCRETE APRON
 - L3 CONCRETE SIDEWALK
 - L4 WOOD MULCH OVER LANDSCAPE
 - L5 SODDED GRASS
 - L6 LANDSCAPE EDGING- SEE DETAIL 1111

LANDSCAPE KEY			
SEE ADDITIONAL LANDSCAPE KEY ON SHEETS A2.1 & A2.2 ALSO			
SYMBOL	NAME	SIZE	QNTY.
	ARBORVITAE, GLOBE	18" HIGH	54
	ASH, PATMORE LINDEN, REDMOND	2 1/2" DIA.	1
	MAPLE, SUGAR	2 1/2" DIA.	14



SECOND FLOOR PLAN - BUILDING #1

2
A2.1
SCALE: 1/8" = 1'-0"
A2.2



PROJECT NUMBER:	9933
DRAWN BY:	DAS, RUL
CHECKED BY:	MAM
DATE:	9-20-99
REVISIONS:	SYMBOL

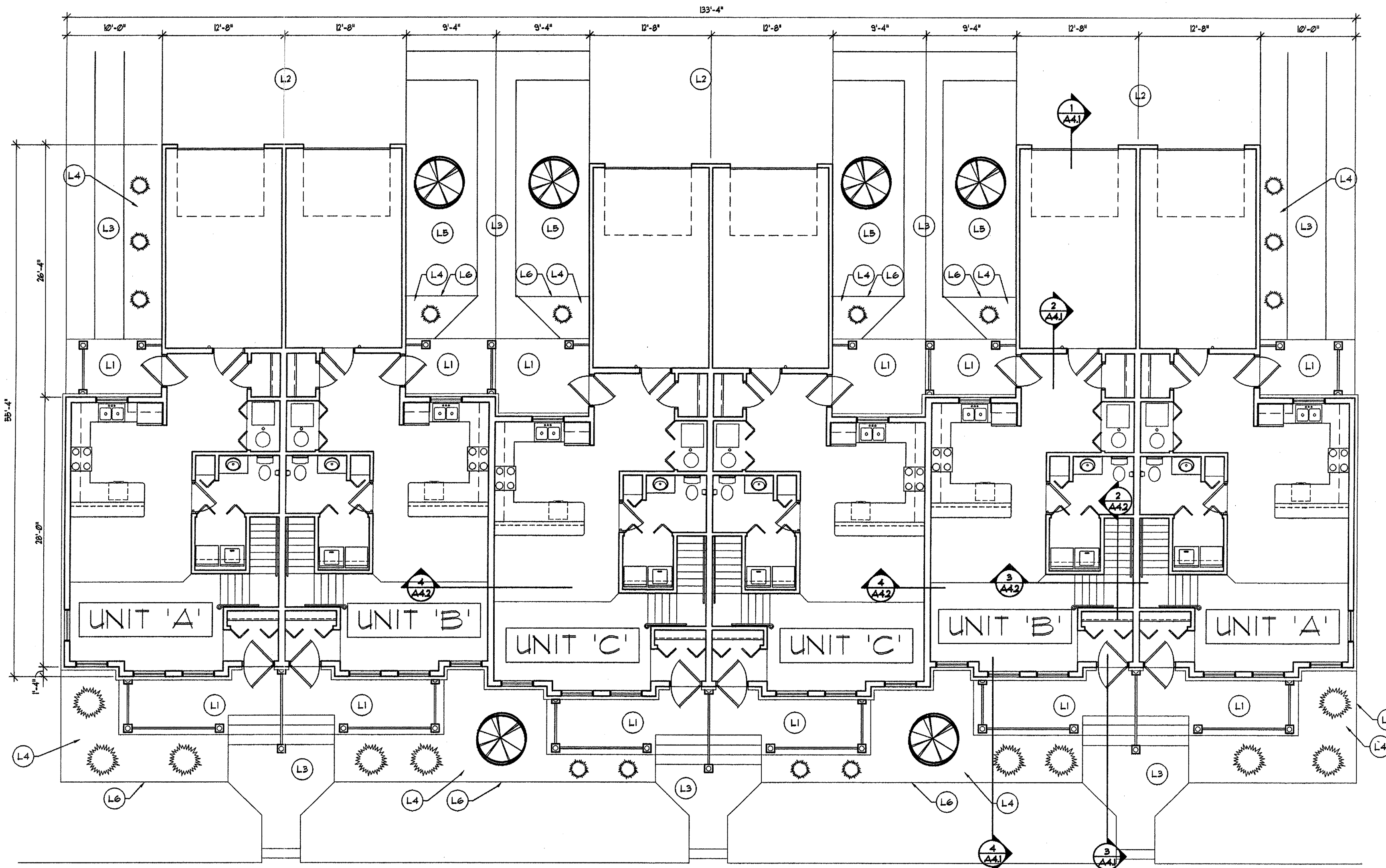
PROJECT NUMBER: 9933
DRAWN BY: DAS, RUL
CHECKED BY: MAM
DATE: 9-20-99
REVISIONS: SYMBOL

THESE DRAWINGS AND SPECIFICATIONS ARE THE SOLE PROPERTY OF HAGEMASTER AND MACK ARCHITECTS, INC. ANY REPRODUCTION OR REUSE OF THESE DOCUMENTS IS FORBIDDEN WITHOUT WRITTEN PERMISSION FROM HAGEMASTER AND MACK ARCHITECTS, INC.

NEW TOWNHOME DEVELOPMENT
THE BROWNSTONES
ST. CLOUD, MN

Hagemaster and Mack Architects, Inc.
Site: 200 St. Germain Street
St. Cloud, Minnesota 56301
P.O. Box 251
St. Cloud, MN 56301-0251
Tel: 820-241-1818

A2.1



FIRST FLOOR PLAN - BUILDING #2

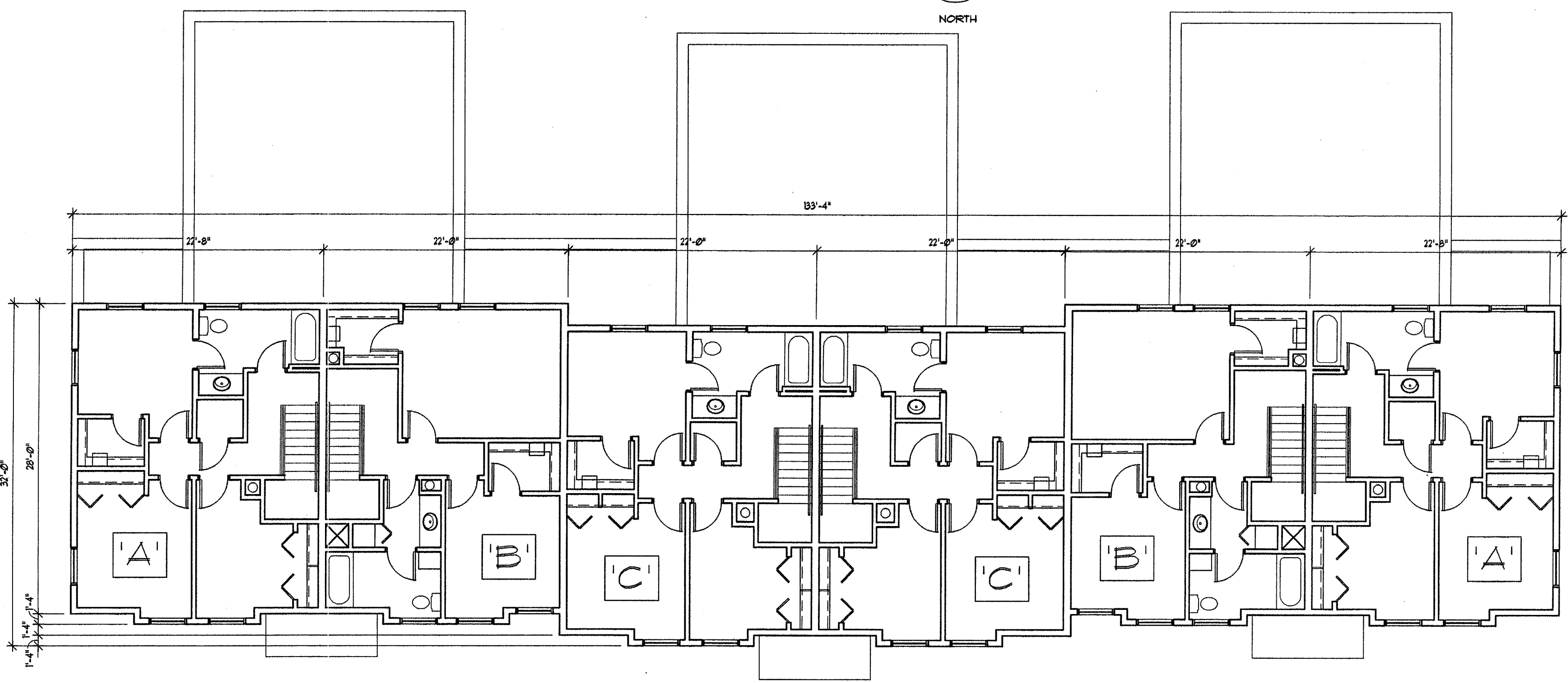
1
A22

SCALE: 1/8" = 1'-0"

A2.1



NORTH

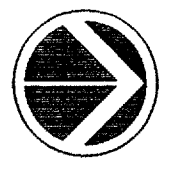


SECOND FLOOR PLAN - BUILDING #2

2
A22

SCALE: 1/8" = 1'-0"

A2.1



NORTH

GENERAL NOTES:

1. ALL DIMENSIONS ON FLOOR PLANS ARE TAKEN FROM OUTSIDE EDGE OF SHEATHING OR CENTERLINE OF STUDS.
2. PROVIDE CONT. DRAFT STOP TO UNDERSIDE OF ROOF SHEATHING AT ALL AREAS ON PLANS SHOWN WITH HEAVY DASHED LINE.
3. PROVIDE DIAGONAL METAL STRAP BRACING AT OUTSIDE CORNERS OF BUILDINGS.
4. PROVIDE ESCUTCHEON PLATES AT ALL KITCHEN AND BATH PIPE PENETRATIONS.
5. PROVIDE NECESSARY BLOCKING FOR KITCHEN CABINETS, DRAPEY RODS, HANDRAILS, TOWEL BARS, GRAB BARS, CLOSET SHELVING, ETC.
6. SEE SHEET A2.6 FOR WALL, DOOR AND WINDOW TYPES.
7. ALL PENETRATIONS IN UNIT PARTY WALLS, (1 HR. TYP.) SHALL BE FIRE STOPPED IN ACCORDANCE WITH FIRE STOP ASSEMBLIES LISTED WITH APPROVED TESTING AGENCIES AND APPROVED BY THE BUILDING OFFICIAL. SEE ALSO SECTION 071210.
8. INSTALL FIRE BLOCKING IN ACCORDANCE WITH THE BUILDING CODE, FOR EXAMPLE:
 1. CONCEALED STUD WALLS & PARTITIONS, INCLUDING FURRED SPACES, AT THE CEILING & FLOOR LEVELS AND AT 10 FT. INTERVALS BOTH VERTICAL AND HORIZONTAL.
 2. AT ALL INTERCONNECTIONS BETWEEN CONCEALED VERTICAL AND HORIZONTAL SPACES, (BOFFITS, DROPPED CEILINGS, COVE CEILINGS, ETC.)
 3. IN OPENINGS AROUND VENTS, PIPES, DUCTS, CHIMNEYS, AND SIMILAR OPENINGS.

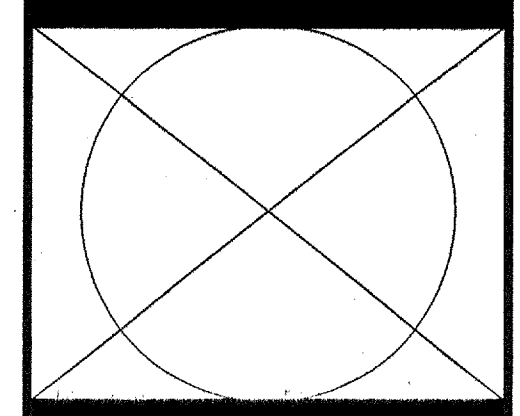
CONSTRUCTION NOTES FOR LANDSCAPE DETAILS:

- L1 CONCRETE PATIO SLAB
- L2 CONCRETE APRON
- L3 CONCRETE SIDEWALK
- L4 WOOD MULCH OVER LANDSCAPE
- L5 SOO
- L6 LANDSCAPE EDGING - SEE DETAIL 1111

LANDSCAPE KEY

SEE ADDITIONAL LANDSCAPE KEY ON SHEETS A2.1 & A2.3 ALSO

SYMBOL	NAME	SIZE	QNTY.
	ARBORVITAE, GLOBE	18" HIGH	54
	ASH, PATHMORE LINDEN, REDMOND	2 1/2" DIA.	7
	MAPLE, SUGAR	2 1/2" DIA.	14



PROJECT NUMBER:	9933
DRAWN BY:	DAS, RUL
CHECKED BY:	MAM
DATE:	9-20-99
REVISIONS:	SYMBOL

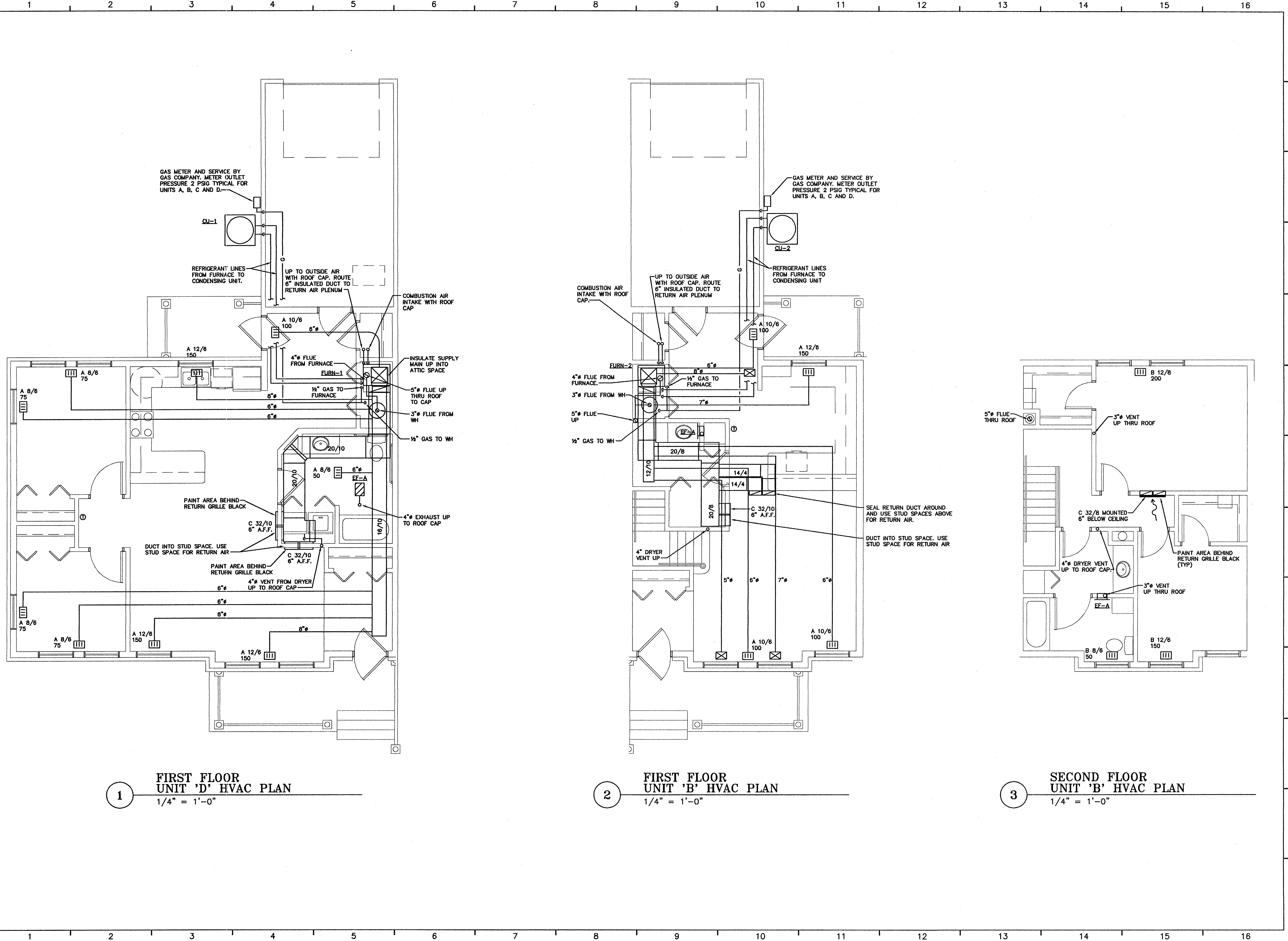
PROJECT NUMBER: 9933
 DRAWN BY: DAS, RUL
 CHECKED BY: MAM
 DATE: 9-20-99
 REVISIONS: SYMBOL

THESE DRAWINGS AND SPECIFICATIONS ARE THE SOLE PROPERTY OF HAGEMASTER AND MACK ARCHITECTS, INC. ANY REPRODUCTION OR REUSE OF THESE DOCUMENTS IS FORBIDDEN WITHOUT WRITTEN PERMISSION FROM HAGEMASTER AND MACK ARCHITECTS, INC.

NEW TOWNHOME DEVELOPMENT
THE BROWNSTONES
 ST. CLOUD, MN

Hagemaster and Mack Architects, Inc.
 Suite 200
 5th West St. Germantown Street
 St. Cloud, Minnesota 56301
 218-232-2125
 FAX: 218-232-2419

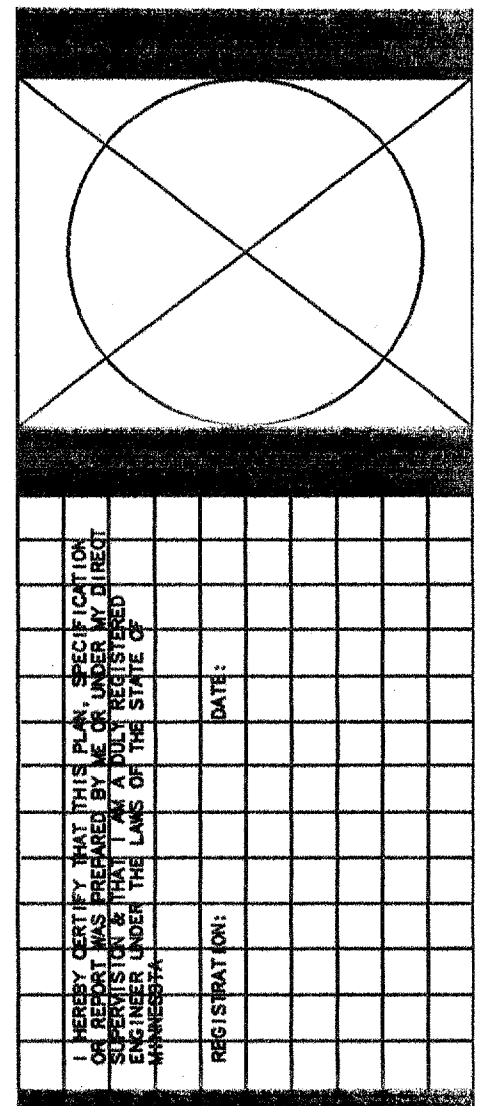
A2.2



1 FIRST FLOOR UNIT 'D' HVAC PLAN
1/4" = 1'-0"

2 FIRST FLOOR UNIT 'B' HVAC PLAN
1/4" = 1'-0"

3 SECOND FLOOR UNIT 'B' HVAC PLAN
1/4" = 1'-0"



PROJECT NUMBER: HMA904
CHECKED BY: CWJ
DATE: 20, SEPTEMBER 1999
REVISIONS:

THESE DRAWINGS AND SPECIFICATIONS ARE THE SOLE PROPERTY OF HAGEMASTER AND MACK ARCHITECTS, INC. ANY REPRODUCTION OR REUSE OF THESE DOCUMENTS IS FORBIDDEN WITHOUT WRITTEN PERMISSION FROM HAGEMASTER AND MACK ARCHITECTS, INC.

STEEN Engineering, Inc.
3005 France Ave., N.
Robbinston, MN 56452
812-520-0884
612-520-0881 Fax

NEW TOWNHOME DEVELOPMENT
THE BROWNSTONES
ST. CLOUD, MN

Hagemaster and Mack Architects, Inc.
3111 29th St. S.
St. Cloud, Minnesota 56301
313-441-1111
Fax: 313-441-4815

M4